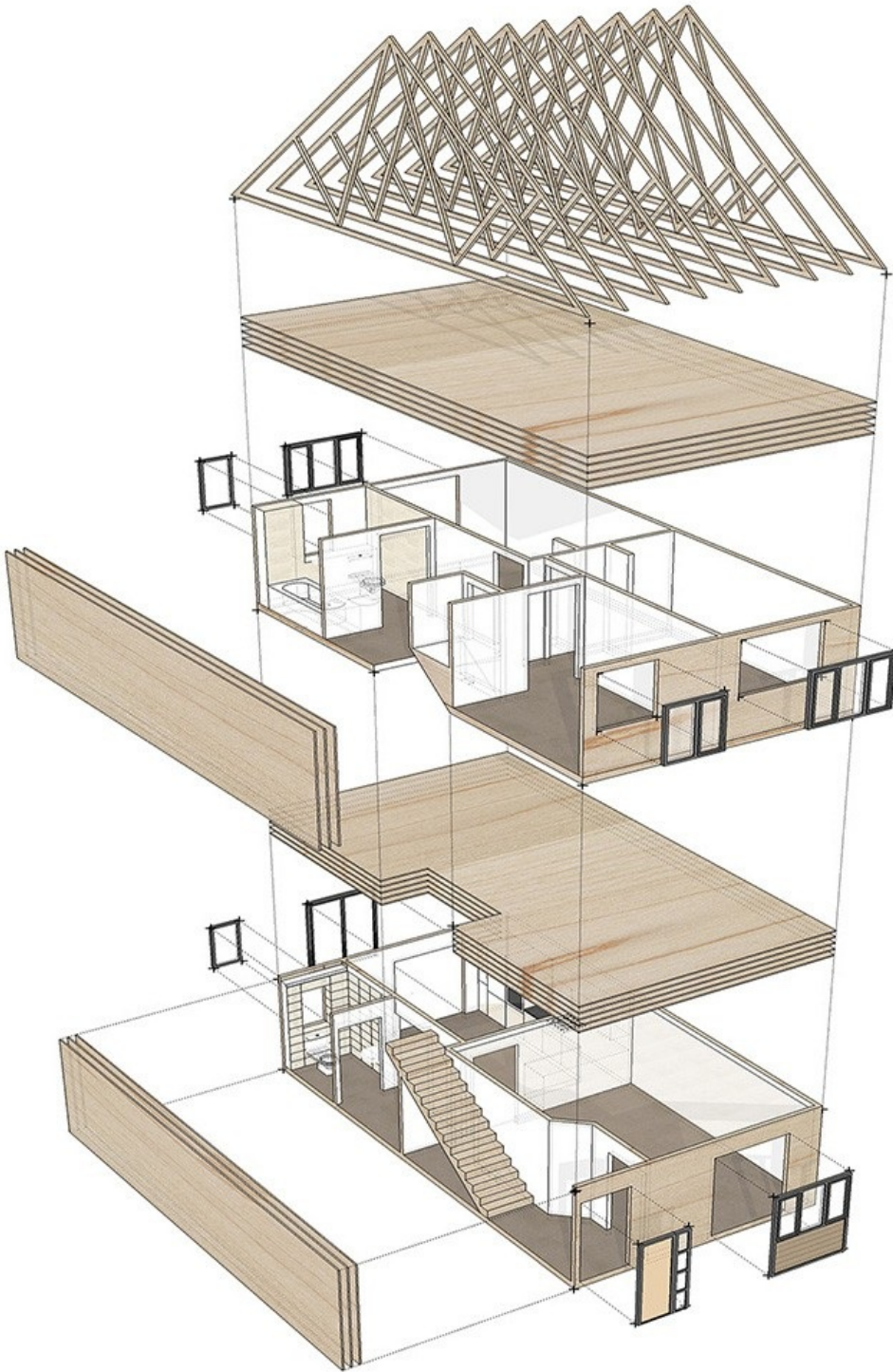


## OFF SITE MANUFACTURE

Call with any queries or feedback on  
**01924 873 873**



Off-site manufacturing allows buildings to be constructed quickly, safely, cost-effectively and with efficient use of resources.

Spawforths Architects have significant experience working with specialist subcontractors and manufacturers in the design off volumetric housing including

producing the UK's first volumetric Cross Laminated Timber (CLT) dwellinghouse prototypes. Our experience also extends to assisting with clients to set up their BIM Protocols for the successful coordination and procurement of components.

At the earliest stages of a project, Spawforths can assist Clients who may wish to consider off-site manufacturing techniques (such as volumetric approaches, 'flat pack' panel solutions or utilisation of prefabricated sub-assemblies).

Spawforths, Junction 41 Business Court, East Ardsley, Leeds, WF3 2AB

Tel: 01924 873 873    Fax: 01924 870 777    Email: [info@spawforths.co.uk](mailto:info@spawforths.co.uk)